

**UC LOGIC**



**ARTISUL**

**D series**

---

## User Manual **for Windows**

**Windows 7 / 8 / 8.1 / 10**

**Driver Version 3.0 later**

Version : Ver.3.0

Release Date : 2016/07

**Microsoft and Windows are either registered trademarks or trademarks of Microsoft Corporation in United States and/or other countries.  
Any additional company and product name mentioned in this documentation may be registered trademarks or trademarks.**

**ARTISUL and UC-Logic are registered trademarks of UC-Logic Technology Corp.  
UC-Logic reserves the right to revise this publication without obligation to provide notification of such changes.  
Copyright © 2015-2016 UC-Logic Technology Corp. All rights reserved.**

# Contents

- I. General Information..... 4**
  - OVERVIEW ..... 4
  - ARTISUL FUNCTIONS ..... 4
  - SYSTEM REQUIREMENTS ..... 4
  - VERIFYING HARDWARE ..... 5
  - INSTALLATION ..... 7
  - USAGE TIPS ..... 11
  - MAPPING TO MULTIPLE MONITORS ..... 11
- II. ARTISUL configuration ..... 12**
  - Dashboard ..... 13
  - Devices ..... 14
  - HOT KEYS ..... 15
  - Pen ..... 17
  - CALIBRATION ..... 19
  - Support ..... 22
  - Save & Backup ..... 23
- III. Changing the Pen Tip ..... 24**
- IV. Question & Answer ..... 25**
- V. The right setting of graphic applications..... 37**
- VI. How to care for your ARTISUL..... 39**
- Appendix 1: Troubles and Solutions..... 40**
- Appendix 2: Uninstall ARTISUL Driver. .... 42**
- Appendix 3: Hot Key comparison table..... 43**

## I. General Information

### OVERVIEW

Welcome to the world of **ARTISUL**! You'll be able to discover how easy it is to control your personal computer by using an **U Pen** instead of a mouse.

The function of the **U Pen** is able to draw a line very thin, thick, light or dark (also known as "pressure sensitivity"). You also can write, sign, annotate documents, and draw, sketch or paint as easily as you would on normal paper and simulate the functions like pencil, mark pen, brush, or watercolor pen by using graphics software such as Adobe® Photoshop™, Corel® Painter™ and Clip Studio Paint™.

### ARTISUL FUNCTIONS

After installing the device driver, your **ARTISUL** features have the following functions:

- Direct pointing – You can move the cursor to any location by hovering the digital pen tip over your **ARTISUL** screen.
- Three-button mouse commands - Your **ARTISUL** provides all the functions of a three button mouse by using its pen tip and two buttons.
- Scroll Dial – You can scroll documents and Web pages by pressing the middle button of the Scroll Dial over your **ARTISUL** screen.
- Pressure sensitivity – This feature allows you to emulate various brushes and pencils so when you press down the pen tip with different pressure , you create pencil lines from very thin to thick.

→Note : The U Pen has a sensitive electronic components inside, which can be damaged when dropped. Please remember to store it in the pen case or pen stand when it is not in use.

### SYSTEM REQUIREMENTS

Windows 7 / 8 / 8.1 / 10 ; USB port and HDMI port; Internet connection.

### VERIFYING HARDWARE

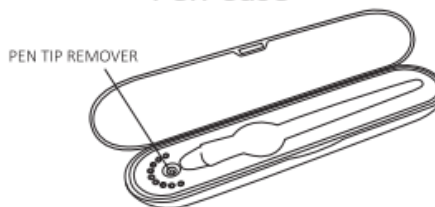
Your **ARTISUL** and package contents are shown below. If anything is missing, contact your dealer immediately.

#### Product and Accessories

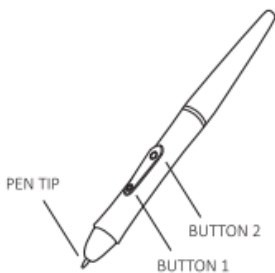
##### ARTISUL D13 Drawing Tablet



##### Pen Case



##### U Pen (P58A)



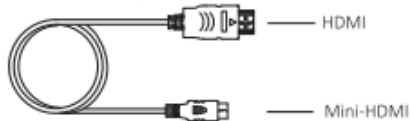
##### Pen Tips Replacement



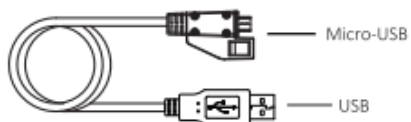
##### Pen Stand



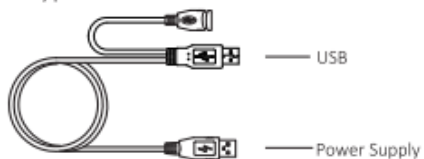
##### HDMI Cable



##### USB Cable



##### Y Type Cable



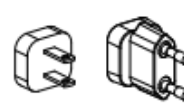
##### Quick Start Guide



##### Power adaptor



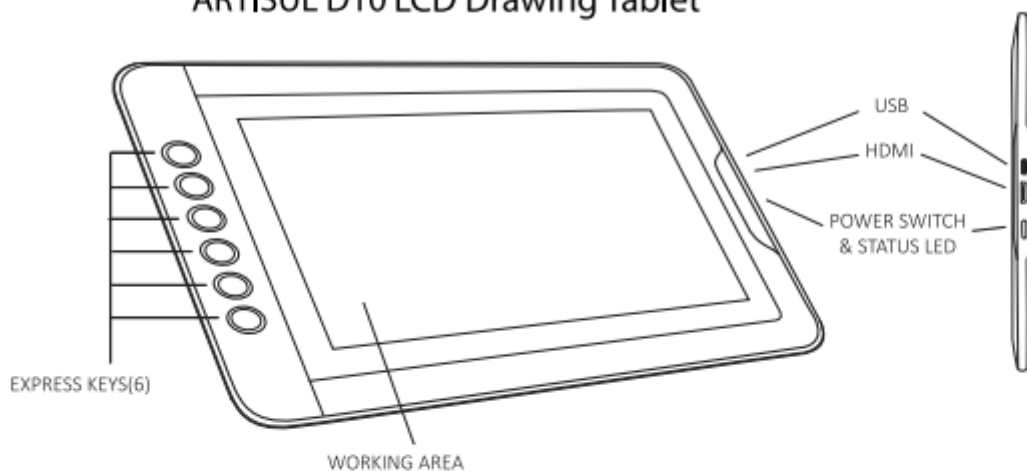
##### Plug



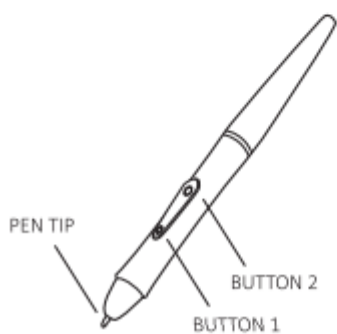
# D10

## Product and Accessories

### ARTISUL D10 LCD Drawing Tablet

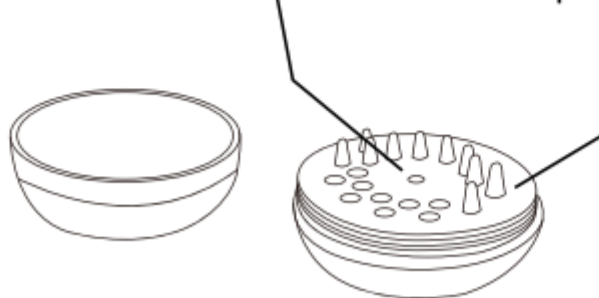


### U Pen (P58A)



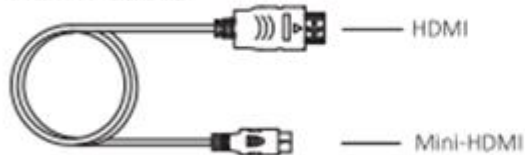
### Built-in Tip Removal

### Pen Tips Replacement

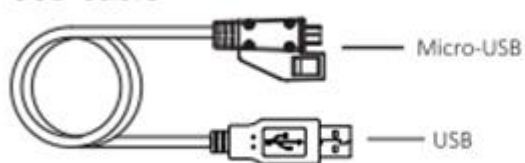


### Pen Tip Box

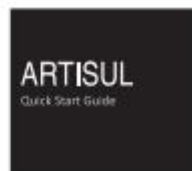
### HDMI Cable



### USB Cable



## Quick Start Guide

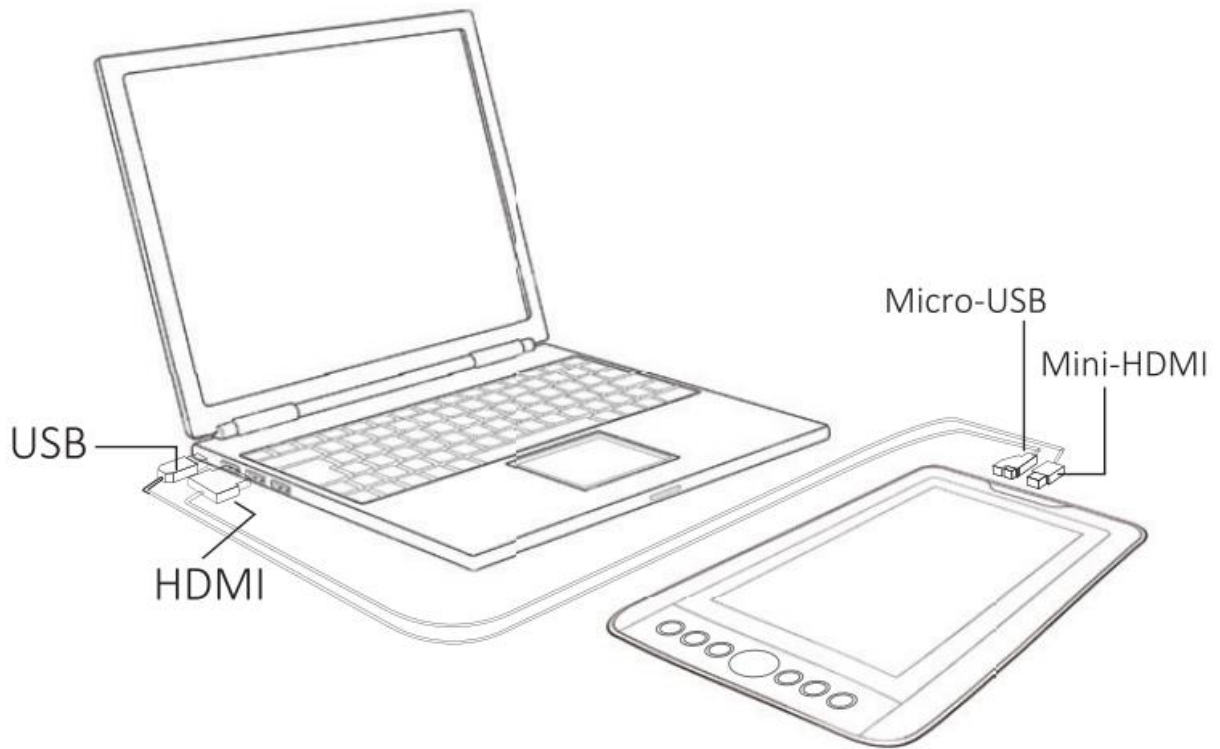


## INSTALLATION

### ✓ **HARDWARE INSTALLATION**

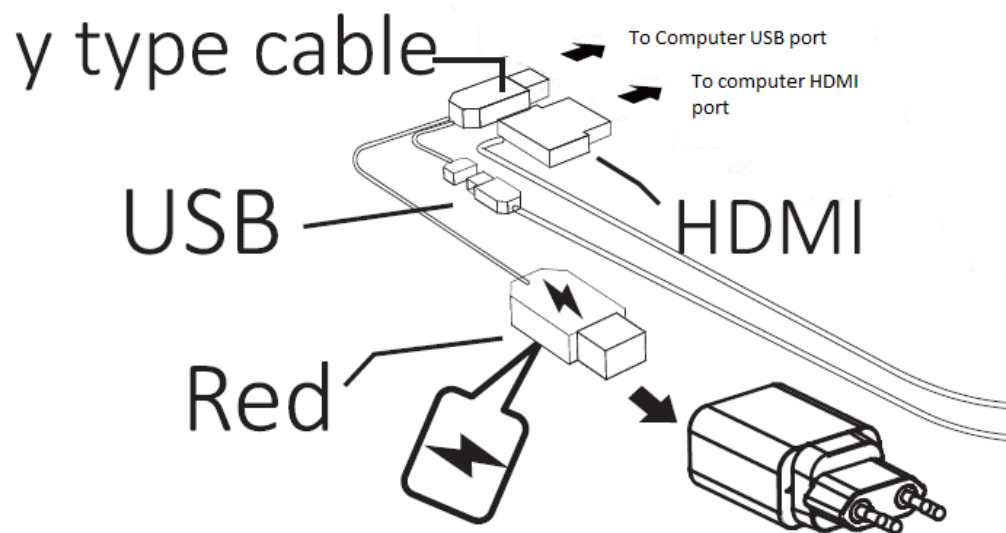
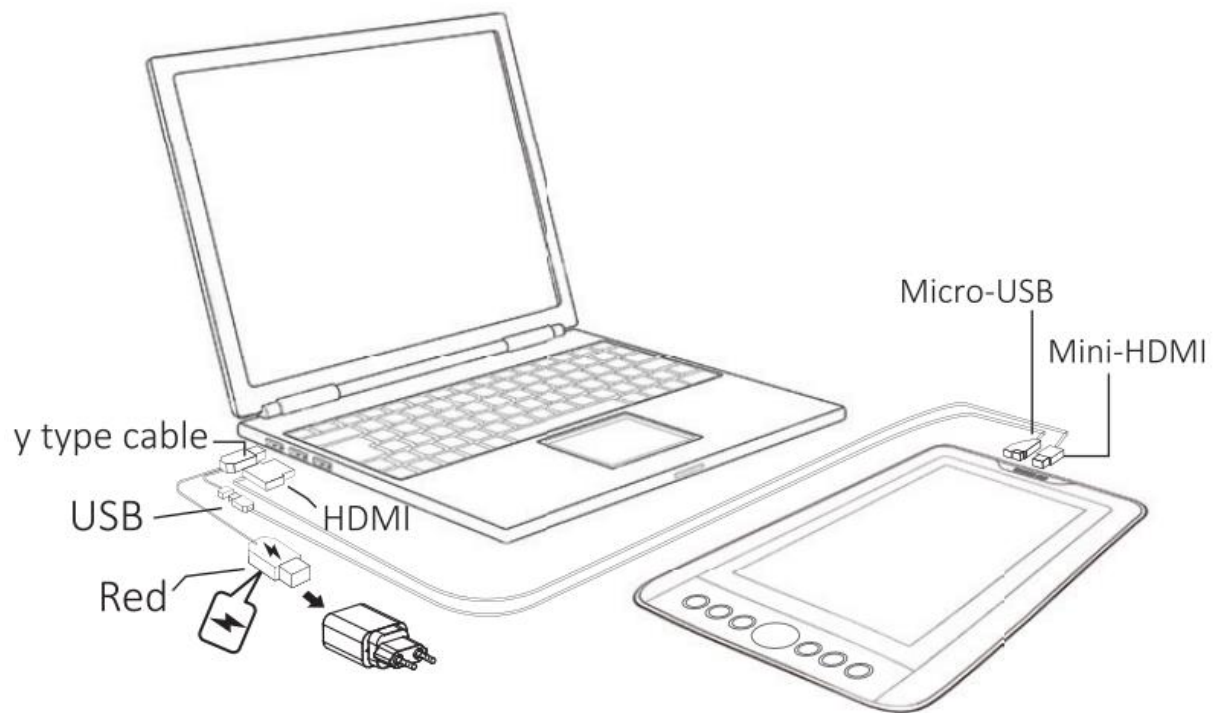
There are two ways to install your hardware:

1. Standard install



Connect your **ARTISUL** with a HDMI & USB interface into the computer

## 2. Using external power adapter (D13 only)



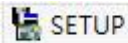
→Note : Please remove power adapter first when you want remove **ARTISUL D13**.

→Note: Use only power adapter and cables approved by UC-LOGIC for use with **ARTISUL**.

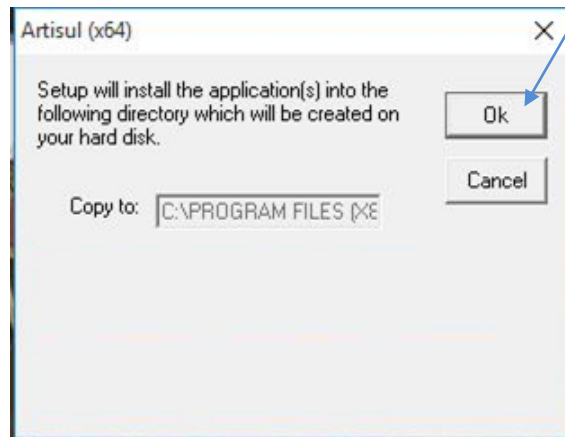


## ✓ INSTALLING ARTISUL DRIVER ON WINDOWS

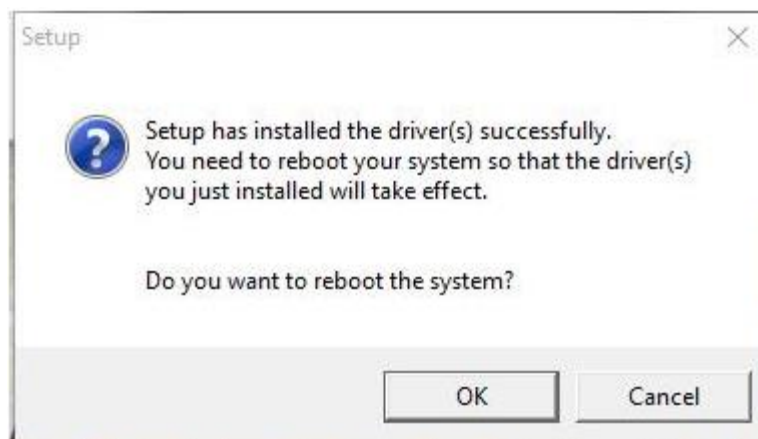
1. Please download the driver from WWW.ARTISUL.COM "Support" page.
2. Decompress the driver file and run SETUP.EXE .



3. When installing the driver, follow the installation instructions on your screen and press the "OK" key.



4. After the installation has completed, you need to reboot the computer.



### →Caution:

1. Please remove any existing tablet drivers before installing the ARTISUL driver. ( This includes the pen tablet driver from any other manufacturer)  
This is to ensure your drivers performance will not be effected.
2. Please run setup as administrator.

After you have finished the driver installation and restarted the Windows system. If the device has been successfully installed, you will see a small **ARTISUL** icon (🖱️) appear in the system tray, which is normally at the lower right corner of the screen.



→Note: Please connected your ARTISUL to your computer before open your creative software.

## USAGE TIPS

### 1. Double tapping

- When you double tap with the digital pen (equivalent to a double click with a mouse), try to quickly lift the pen tip higher up away from the ARTISUL screen before returning for the second tap.

### 2. Scrolling function of digital pen

The U pen has the same function as a normal mouse for scrolling pages. Just press the first button of the digital pen (same function as the mouse middle button) over the **ARTISUL** screen.

### 3. Using U pen without an ordinary mouse

You may install the **ARTISUL** and a mouse in your computer at the same time. However, only one device is able to work at a time. You cannot use the mouse and U Pen at the same time.

## MAPPING TO MULTIPLE MONITORS

If your computer is equipped with more than one monitor, your **ARTISUL** will map to the monitors based upon how they are configured in the DISPLAY PROPERTIES control panel.

After you have correctly configured your computer for using it with multiple monitors, you can then adjust your **ARTISUL** mapping by opening the **ARTISUL** panel and changing the appropriate options.



This enables you to toggle the current **ARTISUL** mapping and screen cursor between the system desktop or primary display and your other monitors.

Please refer to page 19.

→ Note: 1 . Under "extended display" view, you may use your pen cursor to navigate through both ARTISUL and monitor display easily by pressing down on the top button of the pen for 2 seconds. Vice versa, by pressing down the same button for another 2 seconds, your pen cursor will switch back to navigating on only one display (this could be ARTISUL or your monitor depending on your original display setting).

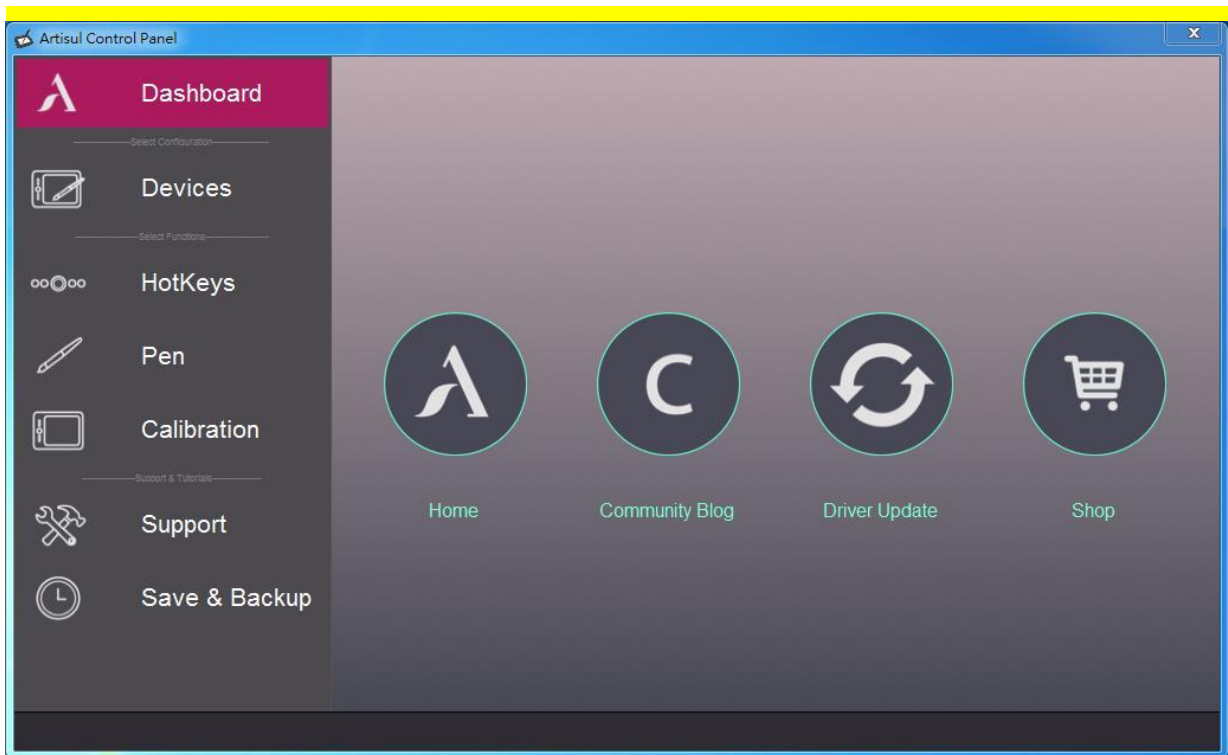
→ Note: 2 .Under the "Duplicate" display mode of the "Multiple Display" function, the display resolution of your monitor must be set to the same resolution as your ARTISUL. Otherwise, your pen cursor will be misplaced on the screen. For **ARTISUL D13**, please make sure the other monitor resolution is set to **1920 x 1080**.

## II. ARTISUL configuration

You may configure the **ARTISUL** by modifying the functions of the pen tip and the two barrel buttons, tap **[Start] > [Settings] > [Control Panel]**, and double-tap the **ARTISUL** icon () , or tap on the **ARTISUL** icon () in the system tray, usually located at lower right hand corner of the screen.

## Dashboard

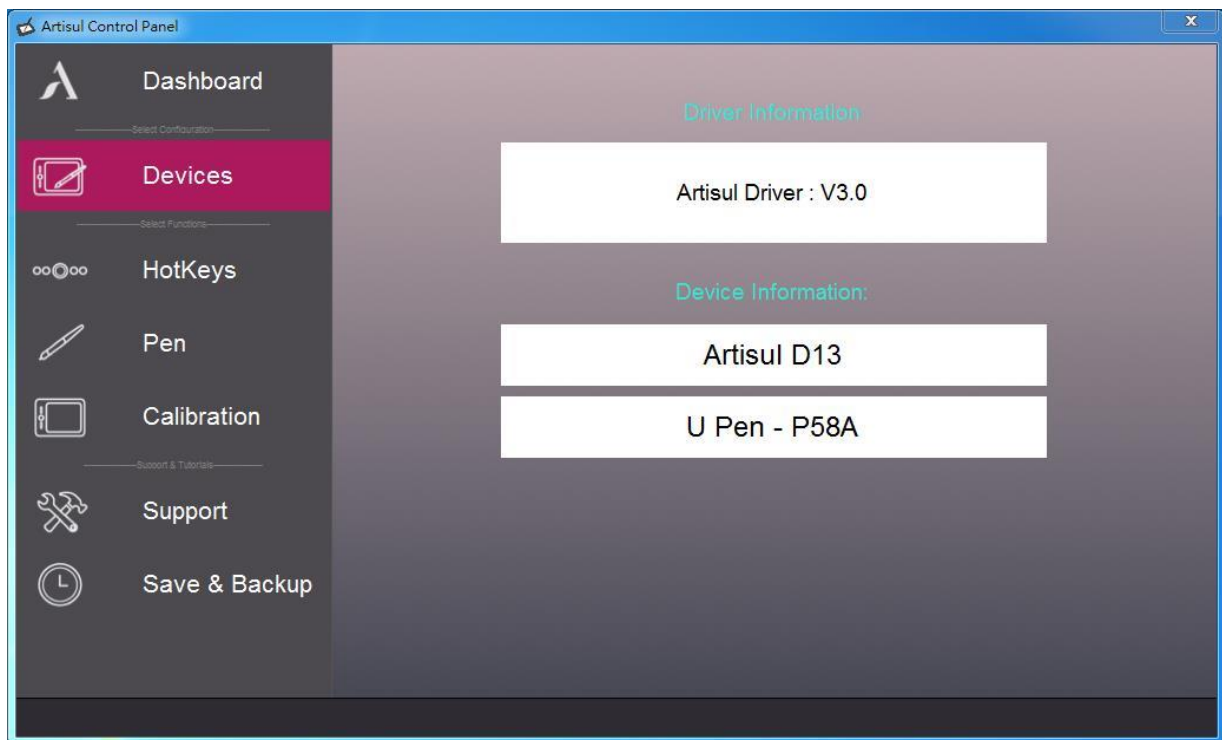
The Dashboard tab can help you connect to ARTISUL website.



You can click the icon to connect to ARTISUL website.

## Devices

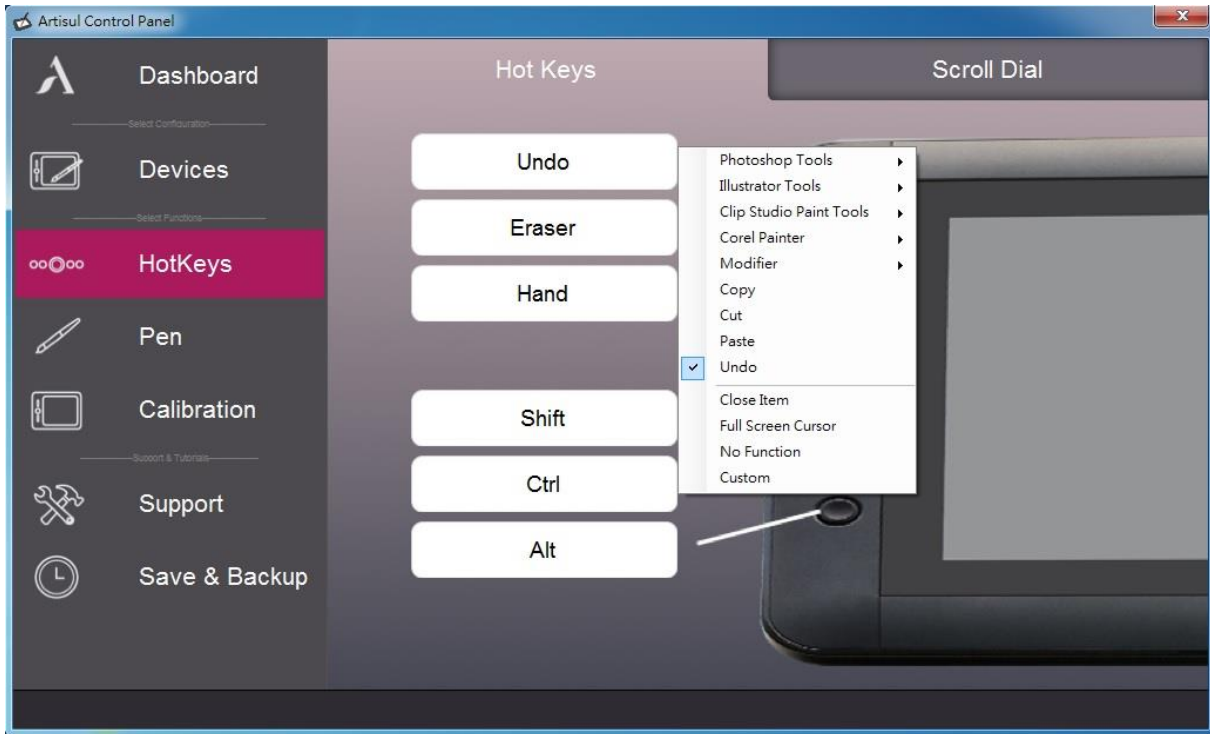
Devices TAB shows device information and driver version.



- ✓ **Device Information**  
If it don't show anything in Device Information , please check Artisul had connected to your computer.
- ✓ **Hot key side**  
You can rotate screen on Artisul. You only click the Right button.

## HOT KEYS

You may re-program the Hot Keys and Scroll Dial functions from the Hot Keys configuration page.



### ✓ Redefine Hot keys

Just click the button and choose from any of the available functions.

→Note : Software keystrokes are based on English input methods. Please make sure your input method is set to English when using Hot Keys on your ARTISUL.

→Note : Most creative software will not accept keystroke input when your U pen is still in use or when your U pen tip is still within the detectable cursor range. To avoid invalid keystroke actions, please allow the pen to cursor to leave the screen of ARTISUL before pressing your Hot Keys. (To leave the screen, allow your U pen tip to be at least 1.5" away from the surface of the Artisul screen.)

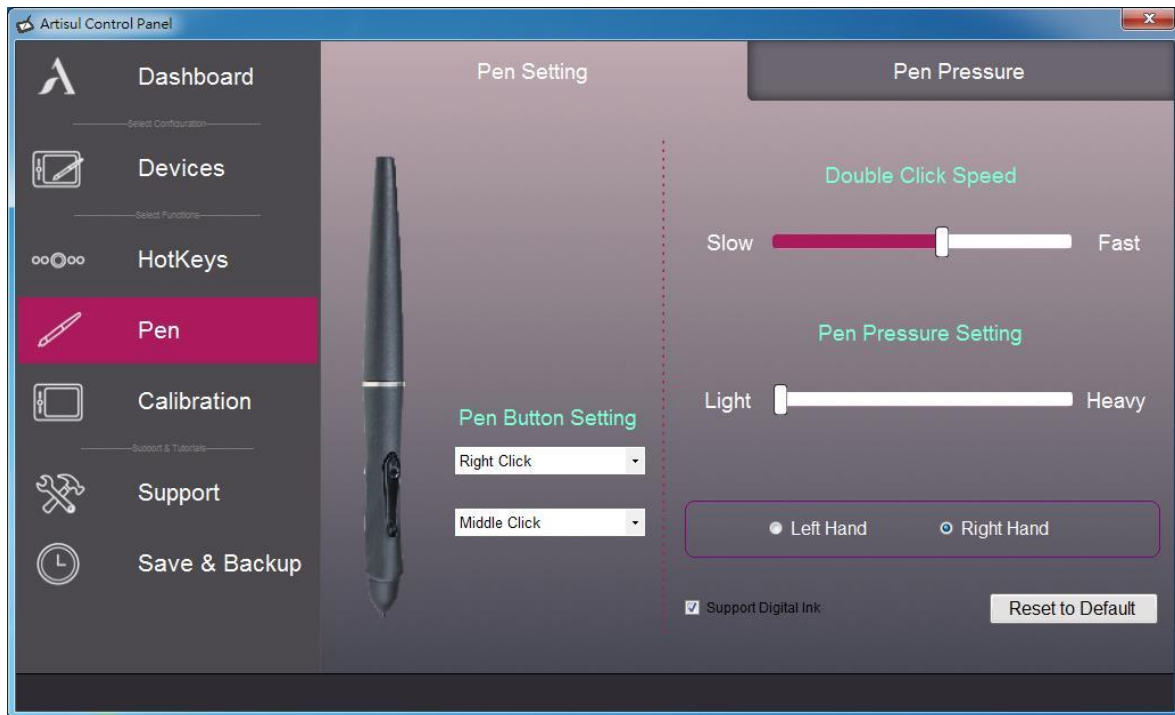
### ✓ Scroll Dial function setting (D13 Only)

You can define 5 function in Scroll Dial . Tap on **【Scroll Dial】** button to select the function which you would like to use. You can press the Slide wheel to switch function.





## Pen

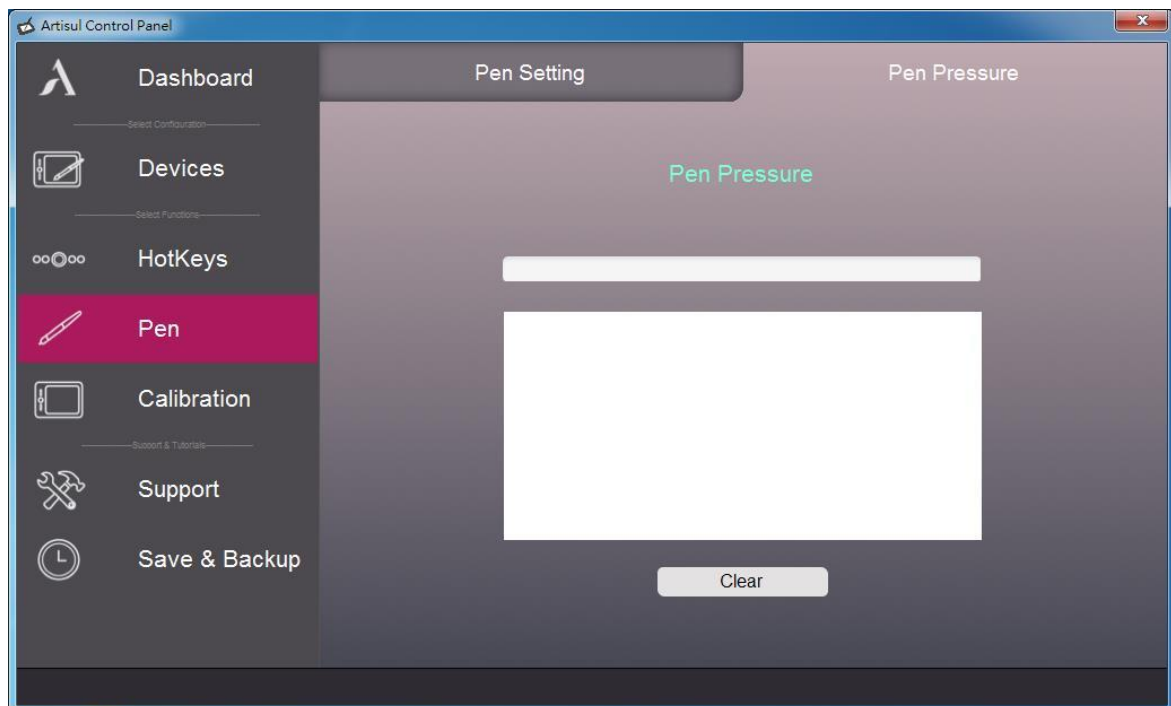


- ✓ **Pen Button Settings:**  
You may re-program the functions of the pen two-barrel buttons by selecting the button name from the drop down menu and assign a command of a traditional three-button mouse to it. According to the mouse function, you can select “No Function”, “Left Click”, “Left Double Click”, “Right Click”, “Middle Click” or “Pen/Eraser/Display Toggle” Toggle.
- ✓ **Double Click Speed:**  
Move the Speed Slider toward “Slow” if you want more time in double tapping with Pen Tip or less time if you move the Speed Slider toward “Fast”. This setting is the same as Double-click Speed on the page displayed by selecting **Start ► Control Panel ► Mouse ► Buttons**. Changing the speed in one section is the same as changing the speed in the other tab.
- ✓ **Pen Pressure Setting:**  
By default setting, tapping with the pen tip is equivalent to a left click of a mouse. Move the slider in the sensitivity bar to adjust the pressure response of the pen tip. Light means your ARTISUL Tablet will recognize the slightest nuance of pressure while heavy will take more pressure before the digital ink or pen click will be recognized. The pressure test is also there for you to test out the differences between light and heavy pen pressure settings. We recommend for you to take some time to set up your own preferred pen settings.
- ✓ **Left Hand / Right Hand**  
Select to left-handed or right-handed users at any time.

- ✓ **Reset To Default**  
Return all of the Pen settings. Tap on the **【Reset To Default】**
- ✓ **Support Digital Ink**  
Select to support the pressure of digital ink settings.

→Note: If the "Supports Digital Ink" function is disabled, most of the art software pen's pressure (Photoshop, Illustrator, Corel Painter) is still working, but pen pressure will not be available when using MS Journal, OneNote (2003, 2007) , etc.

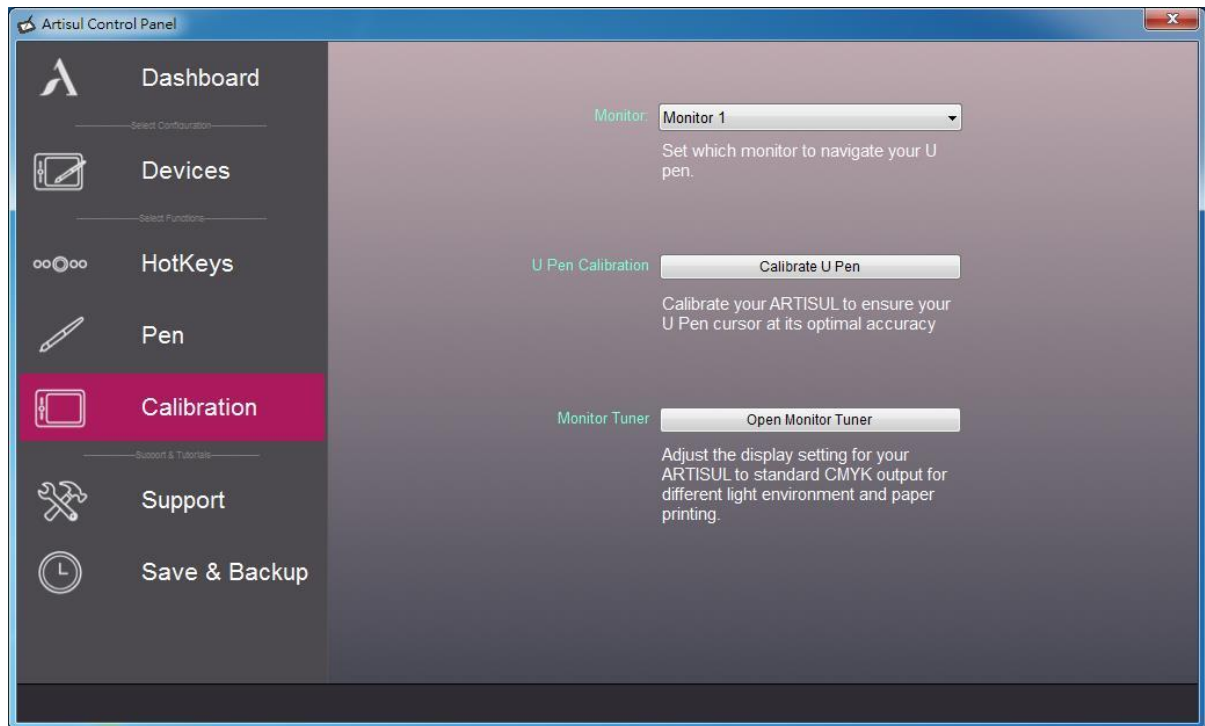
## ➤ Pen Pressure



- ✓ **Pressure Test**  
There are four different colors for selecting the pressure sensitivity of **ARTISUL** , and they can be adjusted in this tab. There is a test area to see the thickness of a line by pressing down on the pen tip to the pad.  
**Clear:** Tap on the **【Clear】** button to clean the space up in the Pressure Test area.

→Note: Please close ARTISUL control panel when you are finished with the Pressure Test .

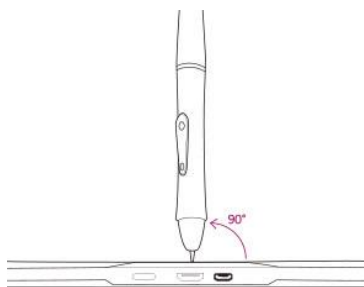
## CALIBRATION



- ✓ **Monitor:**  
If you have chosen to use the "Extend these displays" mode under the "Multiple Display" function, please use the ARTISUL "Monitor" section to select your corresponding screen to navigate your ARTISUL Upen.

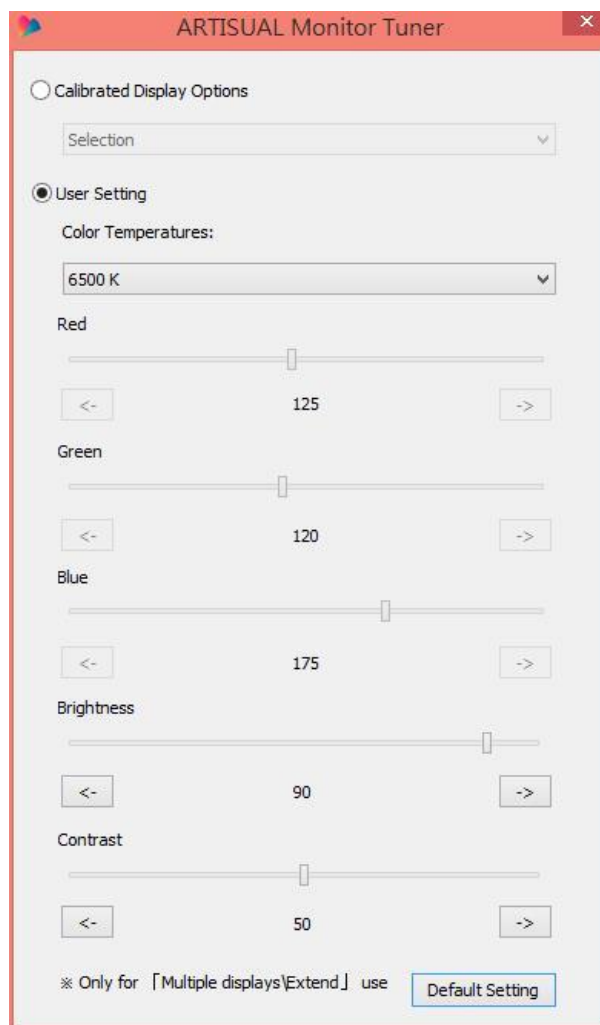
- ✓ **Calibration:**  
Click "Calibration my U pen" to activate the calibration screen.

→ **Caution:** Hold the pen 90 ° vertically on the calibration screen and use the pen tip to click on the center of the crosshairs in the calibration dialogue.



✓ **Open Monitor Tuner:**

Monitor Tuner can help you configure the **ARTISUL** monitor *Brightness* 、 *Contrast* and *Color Temperatures*. Press "Open Monitor Tuner" button to open "ARTISUAL Monitor Tuner" utility.



✓ **Calibrated Display Options**

These options are there to assist you with preparing your designs for CMYK printing. You may choose a different calibrated display setting depending on the type of paper you will be printing your work and the working light environment (this includes sunlight or the color temperature of your office light tubes etc.).

✓ **User setting**

Select User Setting you can configure the **ARTISUL** monitor *Brightness* 、 *Contrast* and *Color Temperatures*.

✓ **Color Temperatures**

You can select the default color temperature settings or the "User 1" to adjust the red, green and blue color values..

✓ **Brightness**

You can adjust the brightness of your **ARTISUL** screen by selecting "Increase" or "Decrease".

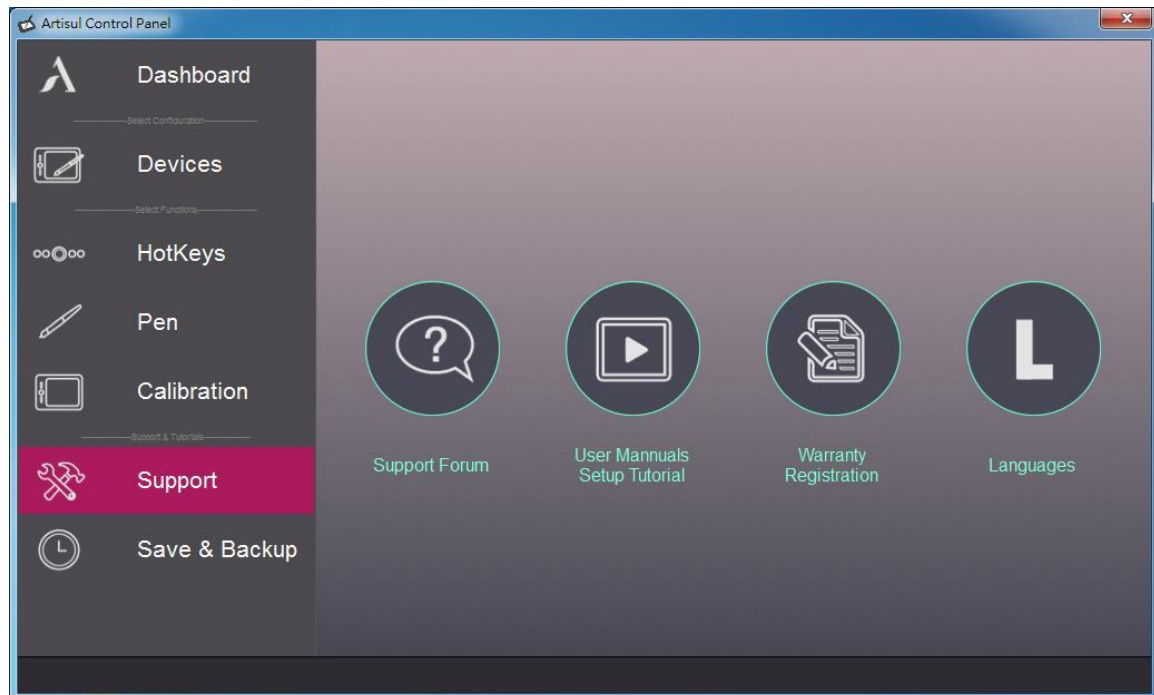
✓ **Contrast**

You can adjust the contrast of your **ARTISUL** screen by selecting "Increase" or "Decrease".

→Note: The "Calibrated Pen Displays" are only there to assist you, to prepare your work for best accuracy before CMYK Printing, refer to guidelines set by your printing services.

→Note : When opening ARTISUL Monitor Tuner, the system will need up to 30 seconds or more to access the necessary information of your monitor. Please note that while the system is calling up the "ARTISUL Monitor Tuner," it is possible for the screen to flicker once or twice.

## Support



### ➤ **Support Forum**

The Support Forum button can help you connect to **ARTISUL** Forum .

### ➤ **User Manuals setup Tutorial**

The User Manuals setup Tutorial button can help you connect to tutorial video .

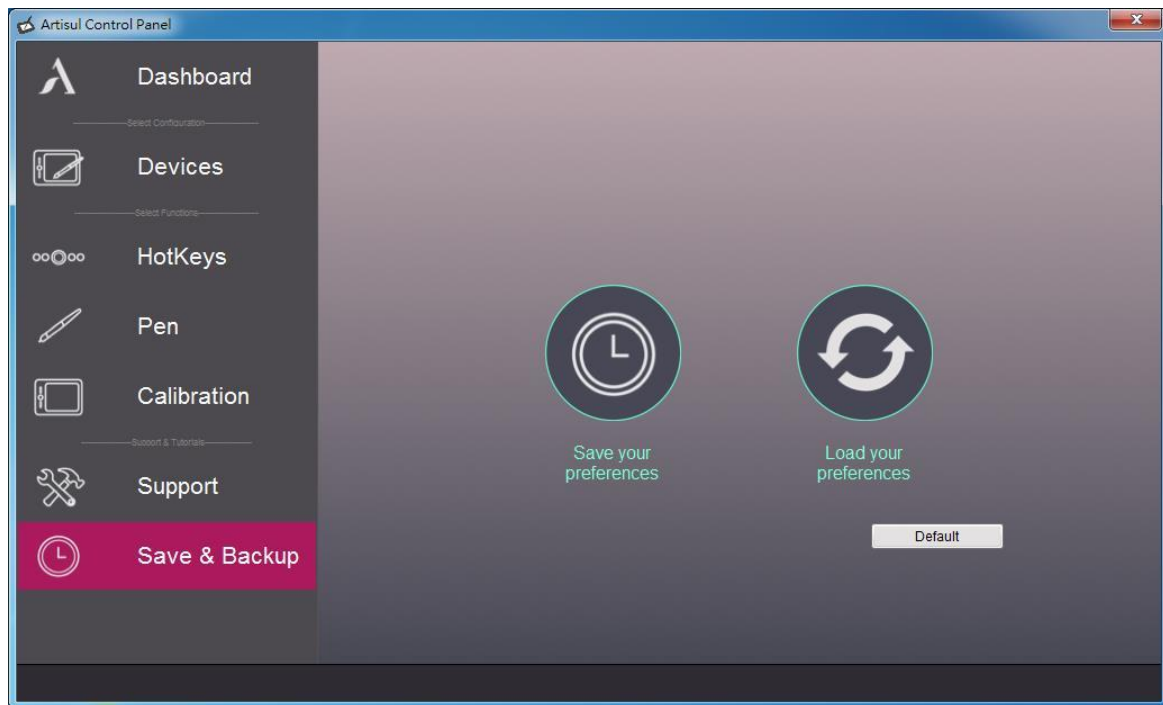
### ➤ **Warranty Registration**

The Warranty Registration button can help you connect to product registration website .

### ➤ **Languages**

The Languages button can change driver language .

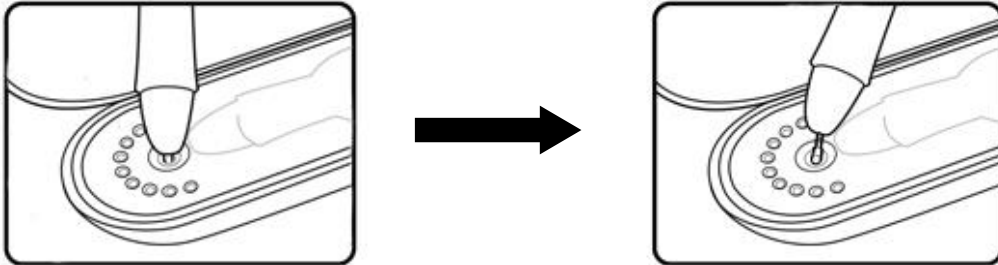
## Save & Backup



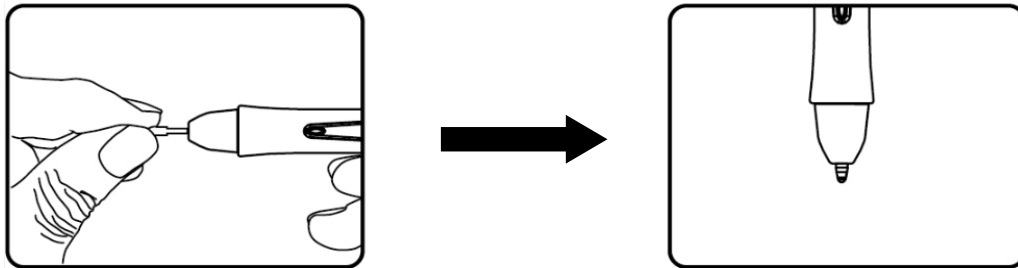
- ✓ **Save your Preferences:**  
Save your Hot keys setting.
- ✓ **Load your Preferences:**  
Restore your Hot keys setting.
- ✓ **Default**  
Reset all of the Artisul settings. Tap on the **【Reset To Default】**

### III. Changing the Pen Tip

**Pull out the pen tip from U Pen by using the tip remover device built into the pen case.**



**Push the new pen tip into the digital pen.**





## IV. Question & Answer

**Q: How can I get the latest updated software?**

**A: You can download the new driver from our website ([WWW.ARTISUL.COM](http://WWW.ARTISUL.COM)).**

- A. Uninstall your old driver: Click [Start] ► [All Programs] ► [TABLET] ► [Uninstall].
- B. Download the latest driver version in the download section and save it into your hard disk.
- C. Unzip the file in a folder on your hard disk (with Windows built-in unzip utility or a program like WinZip for instance).
- D. Double-click the Setup.exe in the folder where you unzipped the file.

**Q: My ARTISUL does not work. What can I do?**

**A: Follow these steps as shown below:**

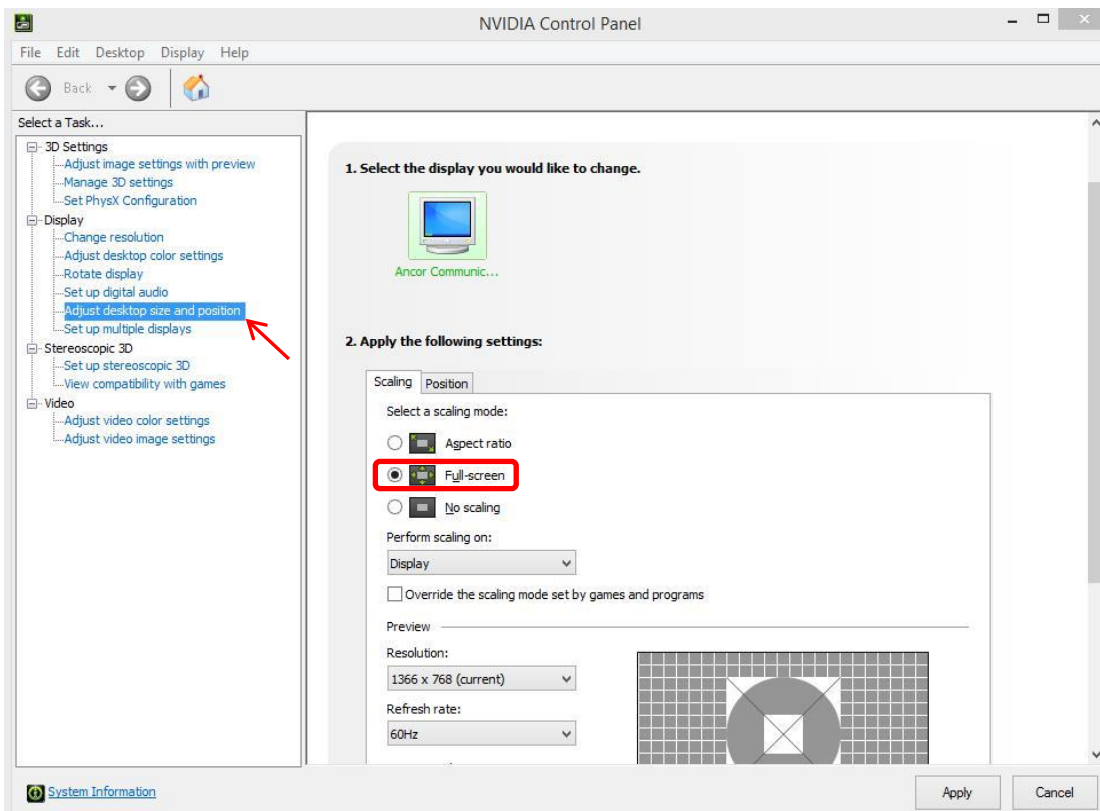
- A. Remove the USB and HDMI plug from the computer.
- B. Un-install the **ARTISUL** driver from the system.
- C. Re-connect your **ARTISUL** USB and HDMI to the computer.
- D. You can download the latest version of the driver directly from our website.
- E. After installing the new driver version, the system will require you to restart your computer.
- F. After you restart your computer, on bottom right of the screen, you can find the **ARTISUL** icon (🖊) within there.
  - a. If you can't find the **ARTISUL** icon (🖊) on the bottom right of the screen, this means the driver failed during startup. This might be caused by an incompatible issue.
  - b. Or check [My Computer] ► [Properties] ► [Hardware] ► [Device Manager], if there is an exclamation mark that is found, this means that the installed driver of **ARTISUL** is incompatible with the Windows system. If you have this problem, you can contact us for assistance.
- G. By clicking the **ARTISUL** icon (🖊) on the bottom right of the screen, you can test the pressure sensitivity to see whether the pen pressure function works or not.

**If you do not have pen pressure, it means the pen might be faulty and you should contact us for a solution.**

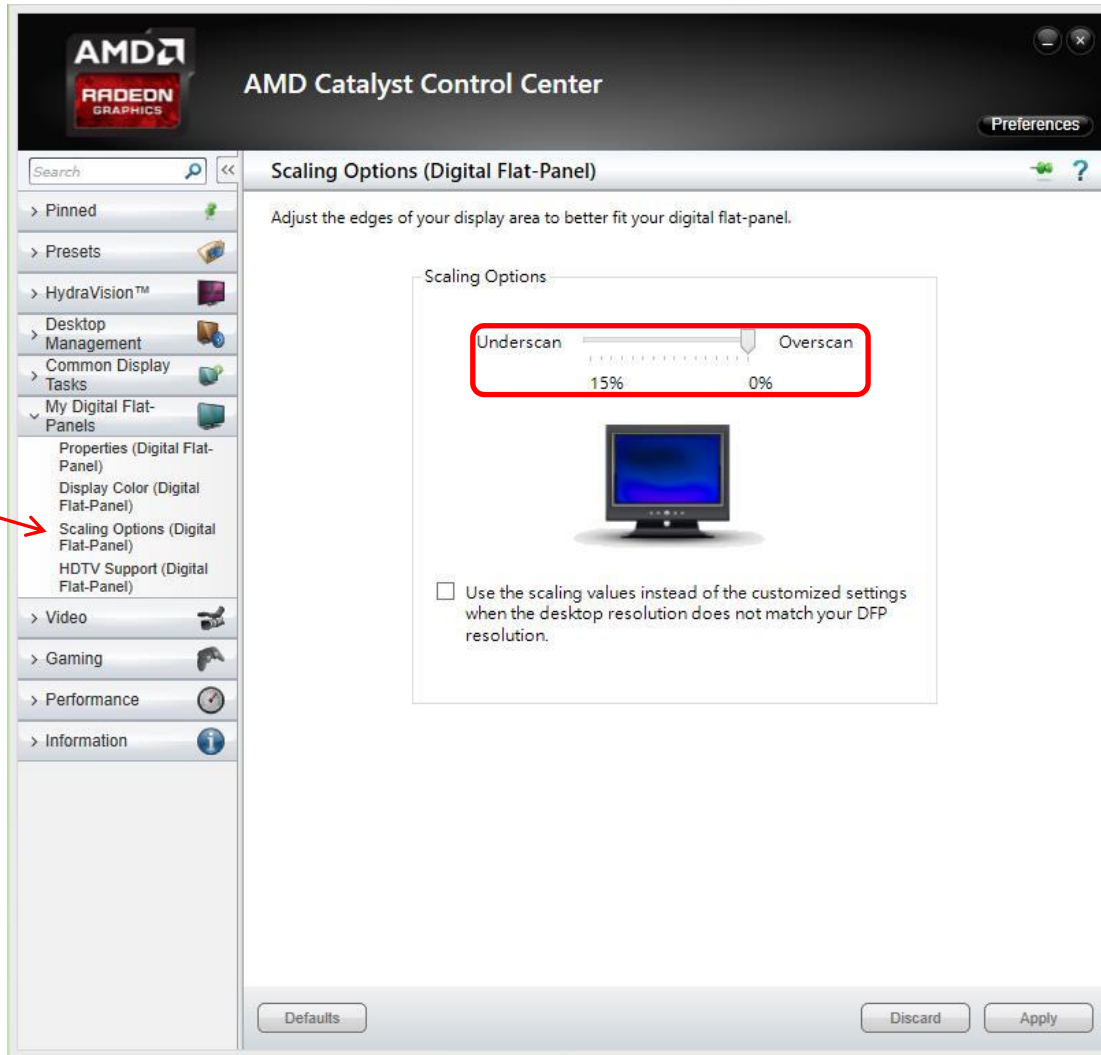
**Q : Can't display Full Screen on my LCD Sketch Pad**

**A : Please follow these steps:**

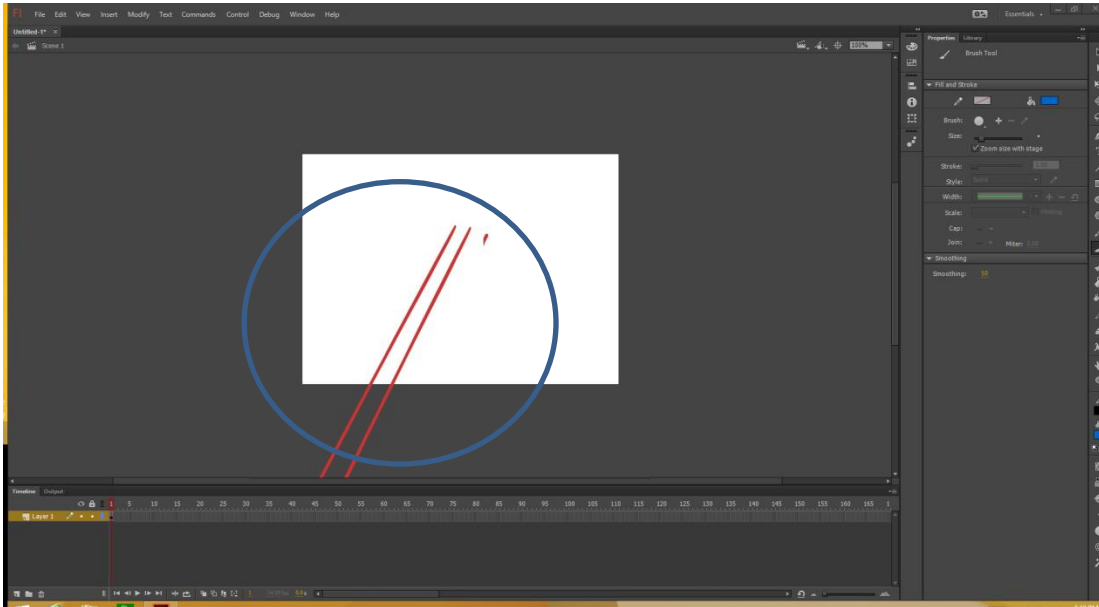
1. If you use NVIDIA Graphics Card in your computer :
  - a. Right click on your Desktop and click for the 「NVIDIA Control Panel」
  - b. Click 「Adjust desktop size and position」
  - c. Select 「Full-screen」 and click 「apply」



2. If you use AMD Graphics Card in your computer :
  - a. Right click on your Desktop and click for the 「AMD Catalyst Control Center」
  - b. Click 「My Digital Flat-Panel」 and Select 「Scaling Options」
  - c. Setting Scaling Options to 「Overscan」 and click 「Apply」

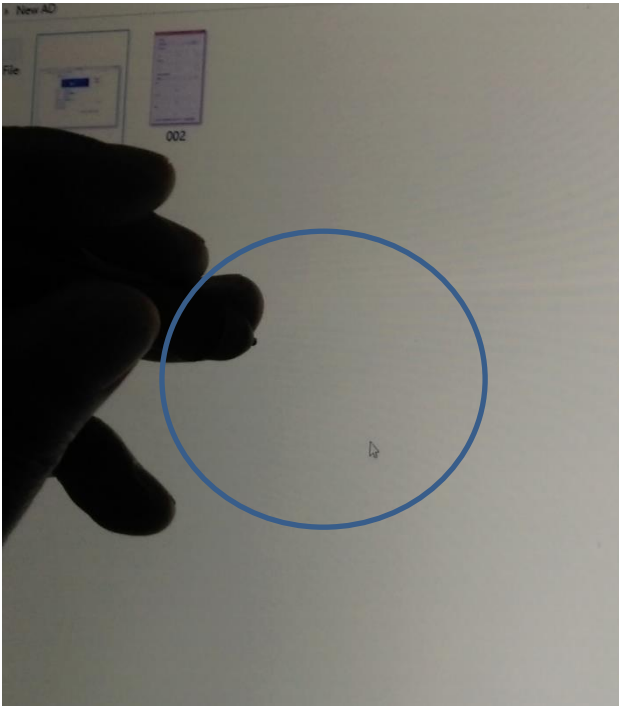


**Q: Under Adobe Flash Professional CC, when the pen tip first makes contact with the working area, a line will show up connected from the bottom margin making it difficult to navigate the brush tool ◦**



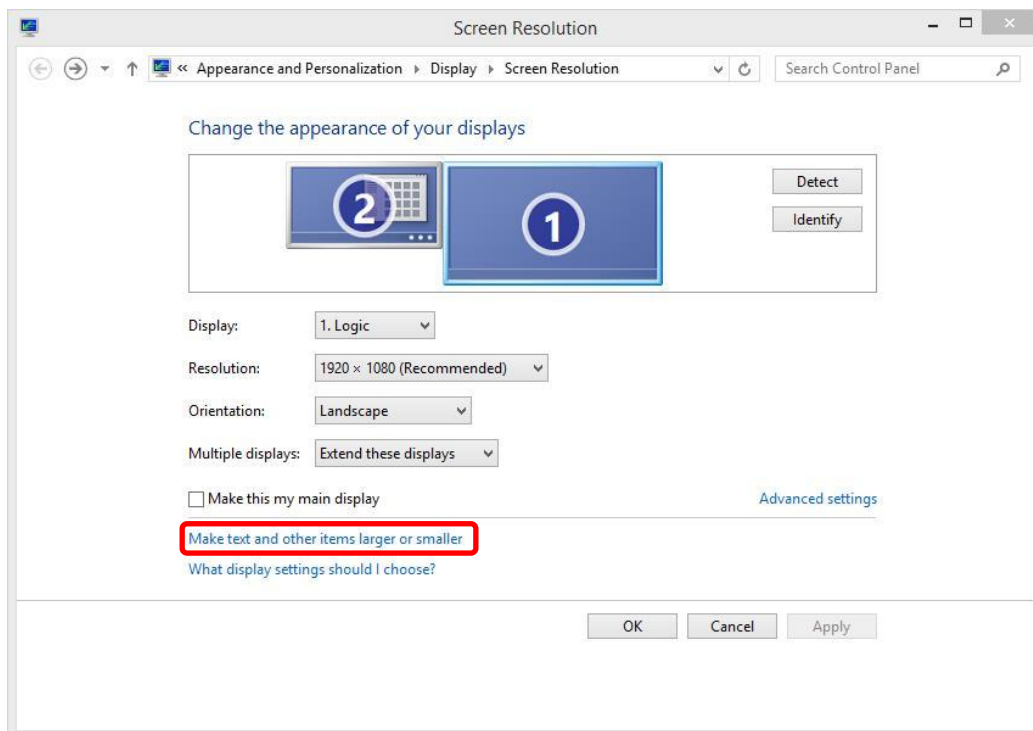
**A : Please update your Adobe Flash Professional CC to last version.**

**Q: Cursor has offset when I open a folder , like this picture.**

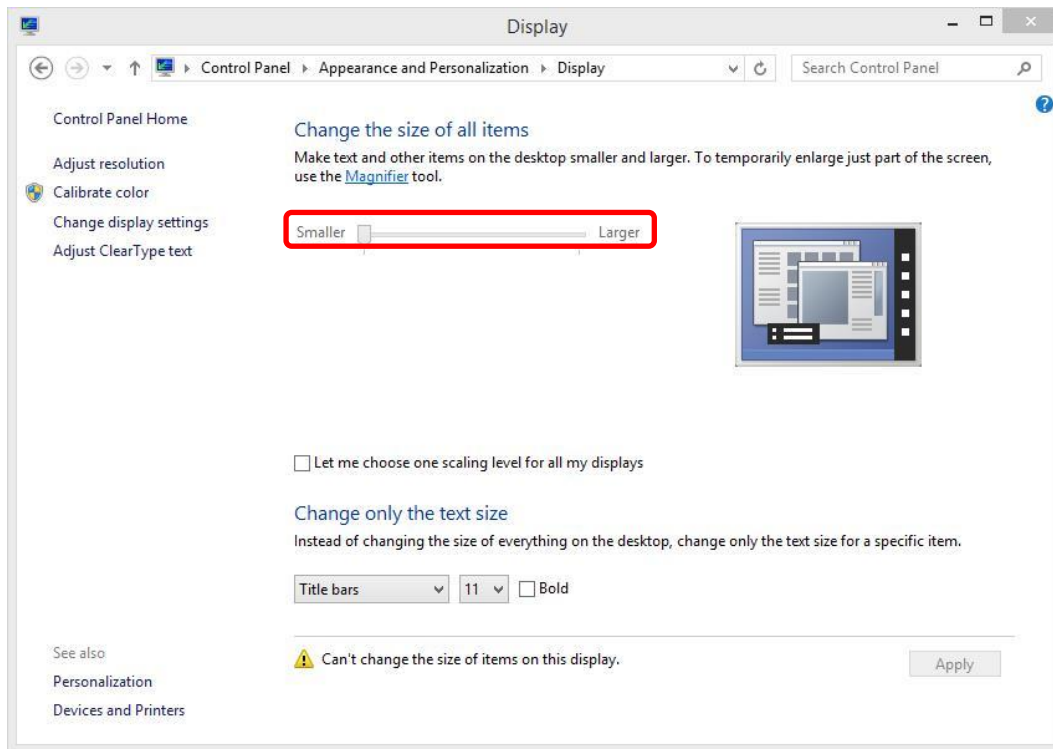


**A : Please follow these steps :**

- 1. Right click on your Desktop and click for the 「Screen resolution」**
- 2. Click 「Make text and other items larger or smaller」**



### 3. Choose 「 change the size of all items 」 to smaller and click Apply.



**Q: Pen won't work after installed driver.**

30

**A : Please follow these steps:**

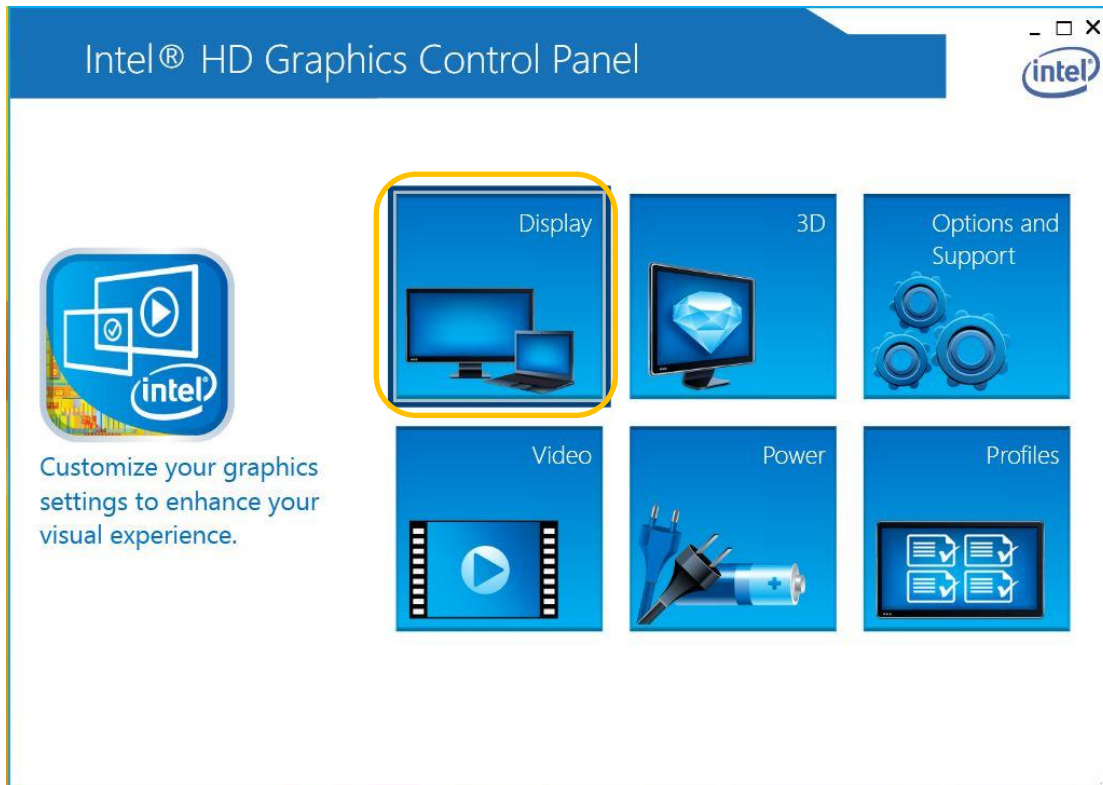
3. Please refer to ARTISUL user menu for how to install hardware, and reinstall your ARTISUL again.
4. Connect the ARTISUL to another USB port, preferably directly to the mother board.
5. Please remove other USB device from your computer and reboot your computer. Check your ARTISUL is work after your computer reboot.
6. Uninstall ARTISUL driver from your computer and reboot your computer.
7. Please download and install the latest driver for ARTISUL.
8. Please check your pen will work after reboot your computer.
9. Test your ARTISUL on a different computer. If your ARTISUL works on another computer, the issue may be other driver or software on your computer. Contact your computer manufacturer additional troubleshooting.

**Q : My ARTISUL screen sometimes flickers or is always flickering. What can I do about it ?**

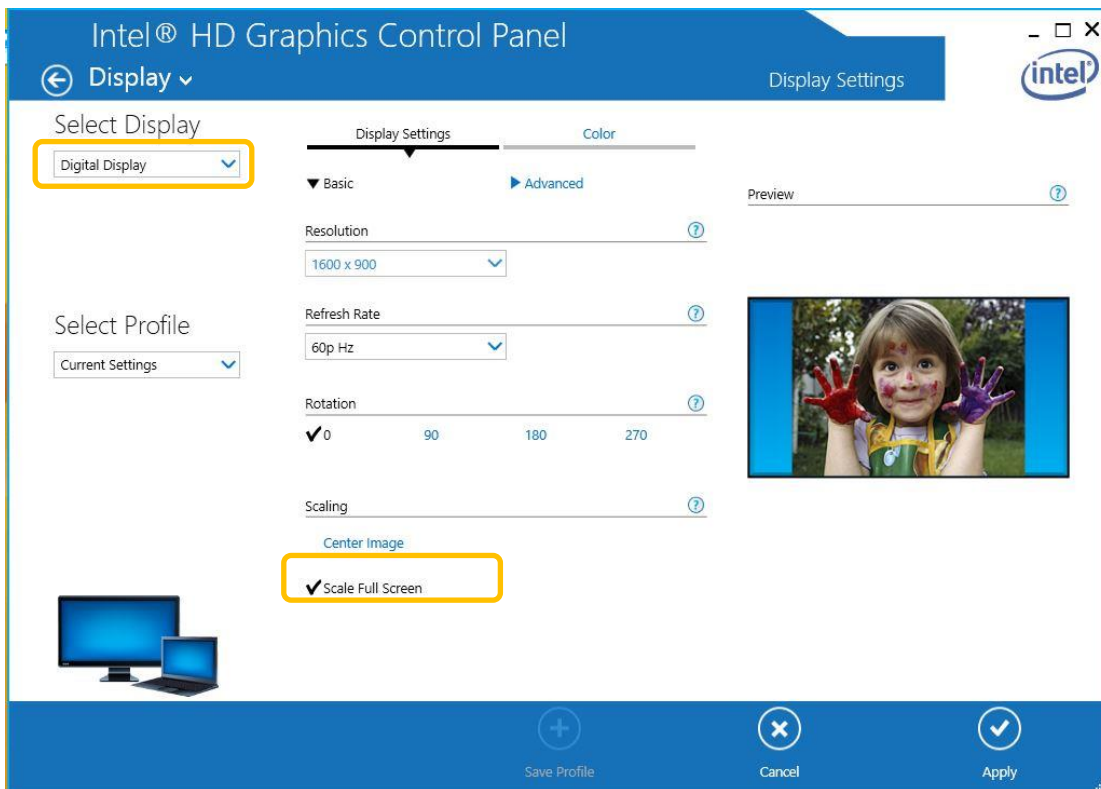
**A : If you experience flickering in ARTISUL monitor, please follow the instructions below for non-flickering display.**

**I. Use Intel HD Graphics :**

1. Run Intel HD Graphics and click "Display"



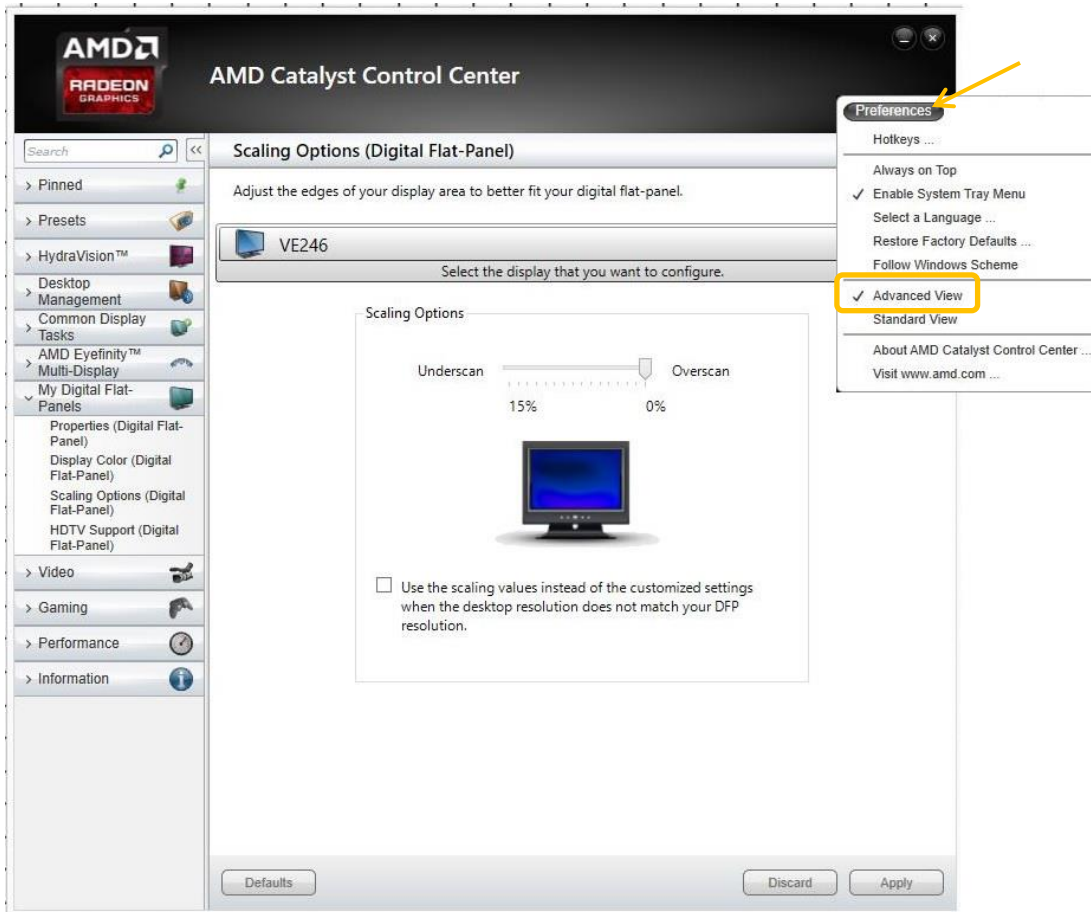
2. Select "Digital Display".
3. Select "Scale Full Screen". Then click "Apply"



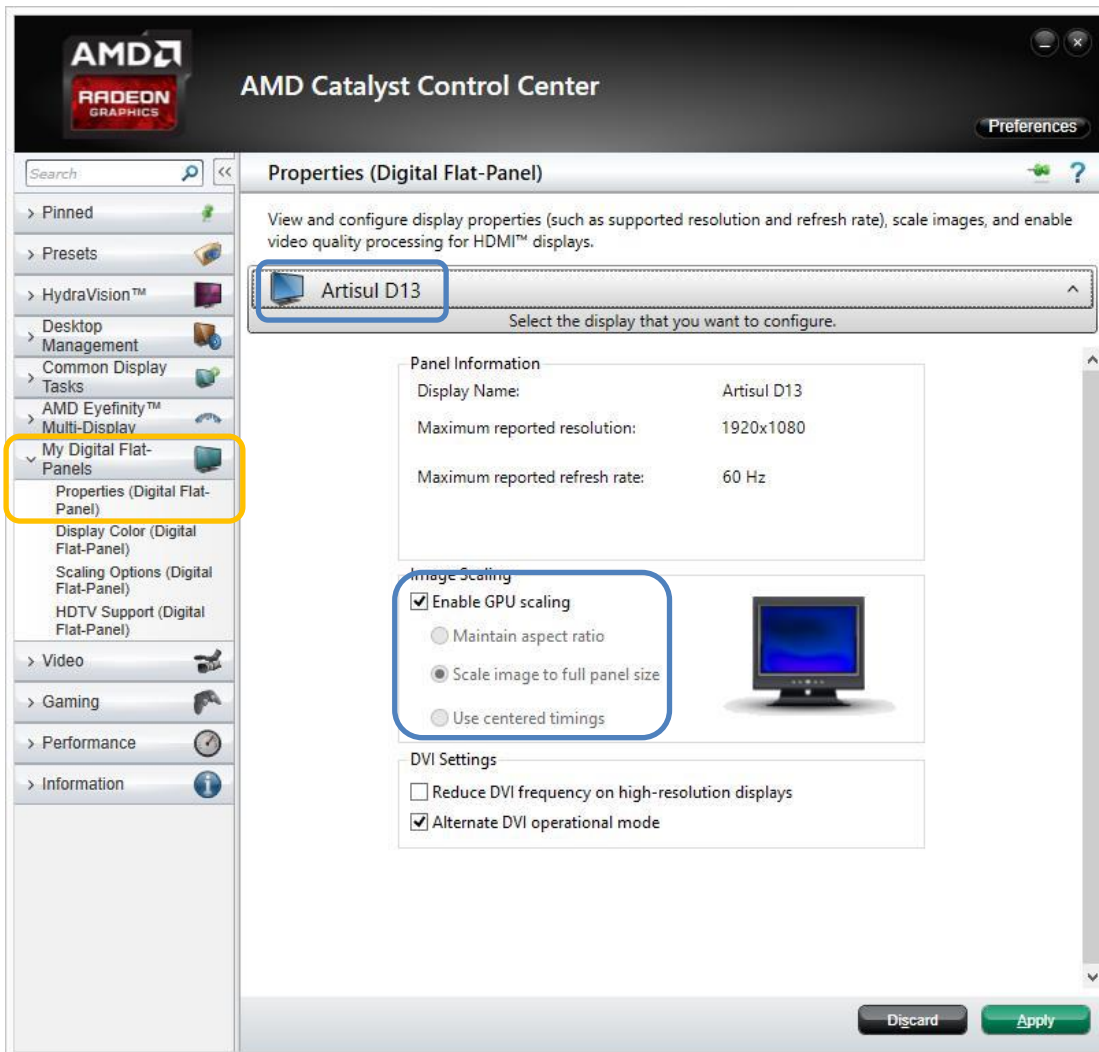


## II. Use AMD Graphics :

1. Run “AMD Catalyst Control Center” , Click “Preferences” and select “Advanced View”

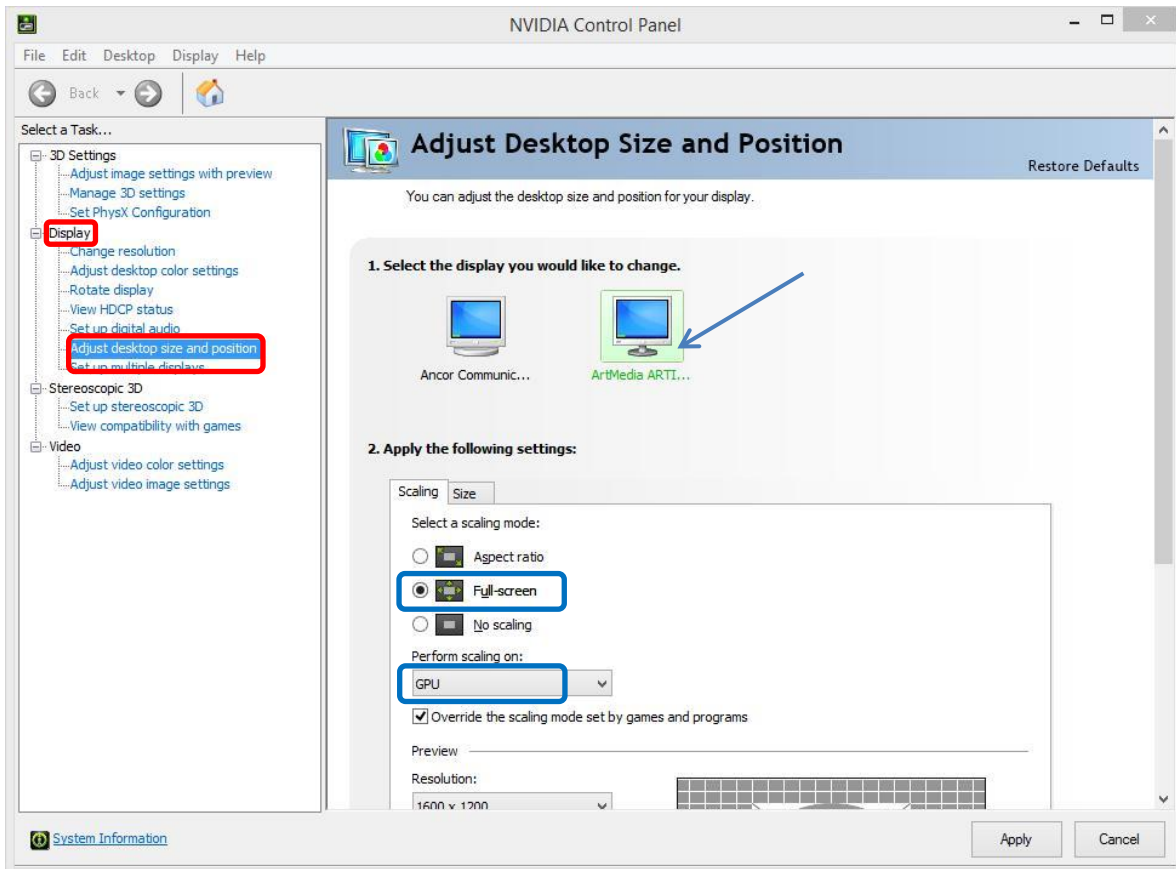


2. Select "My digital Flat-Panels" → "Properties digital Flat-Panels"
3. Select "Artisul D13" and "Enable GPU Scaling", then press "Apply"



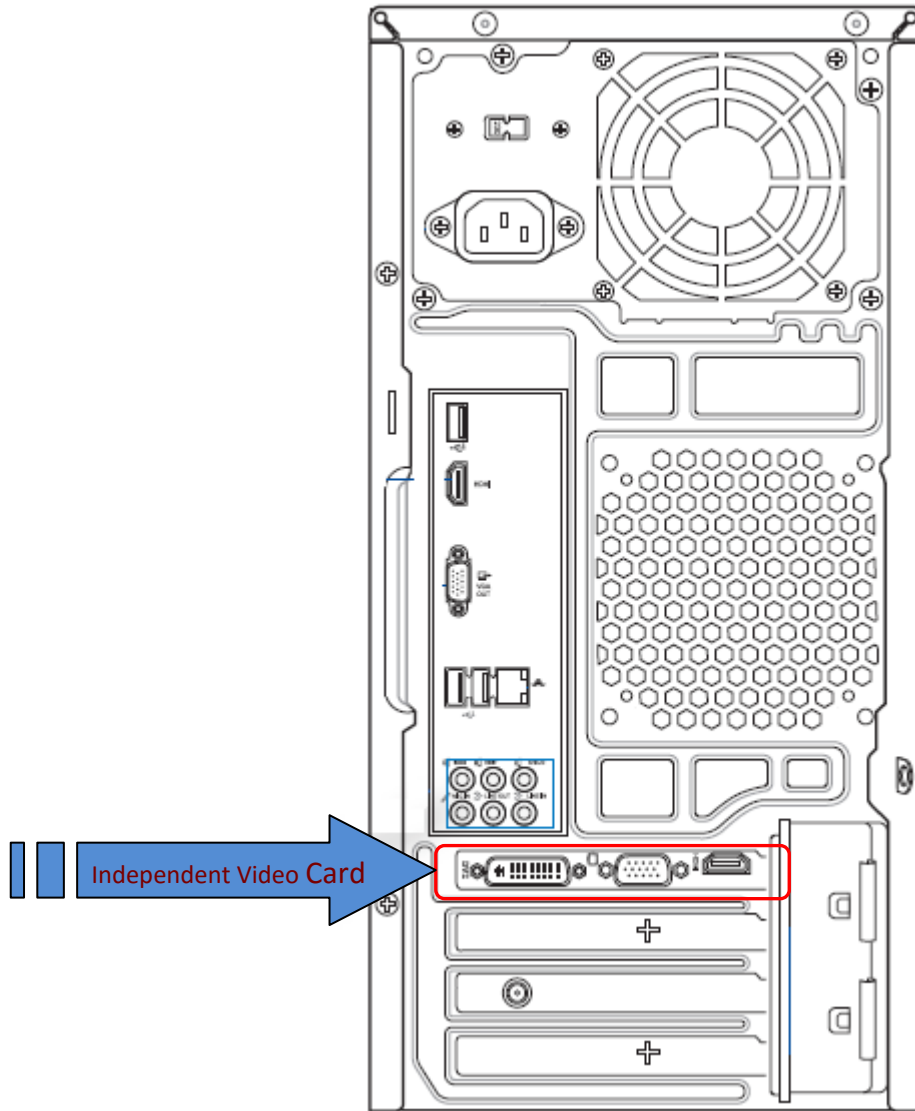
### III. Use Nvidia Graphics :

1. Run NVIDIA Control Panel and click “Display” → “Adjust desktop size position” .
2. Select “ArtMedia ARTISUL D13” .
3. Select “Select a scaling mode” to “Full-screen” .
4. Select “Perform scaling on: “ to “GPU” .
5. Press “Apply” .



**Q : There are not display on My ARTISUL screen. What can I do about it ?**

**A:** Some computer has two display card. If your computer has Independent Video Card. Please connect Artisul to Independent Video Card.



## V. The right setting of graphic applications

Some applications need to change their setting that ARTISUL can has correct action.

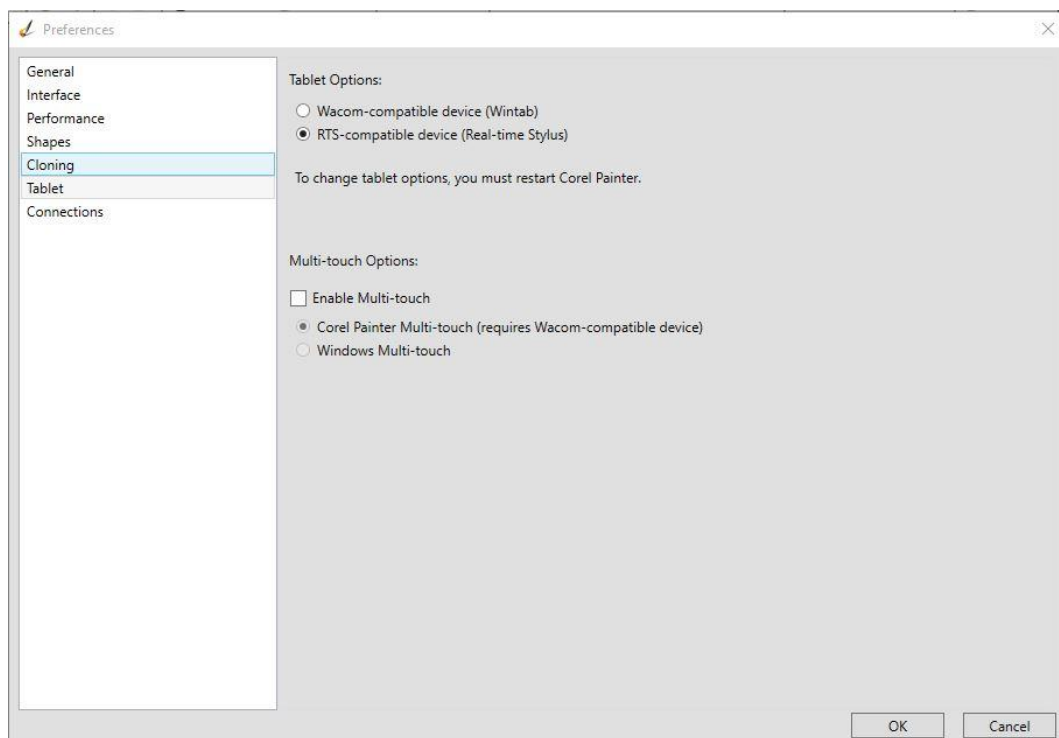
### 1. SAI

Please follow these steps :

- A. Find 「 misc.ini 」 in SAI folder.
- B. Right click on misc.ini and select “Edit”
- C. Find TabletMouseSimulation = 0 , then modify 0 to 1 and save the file.
- D. Restart SAI

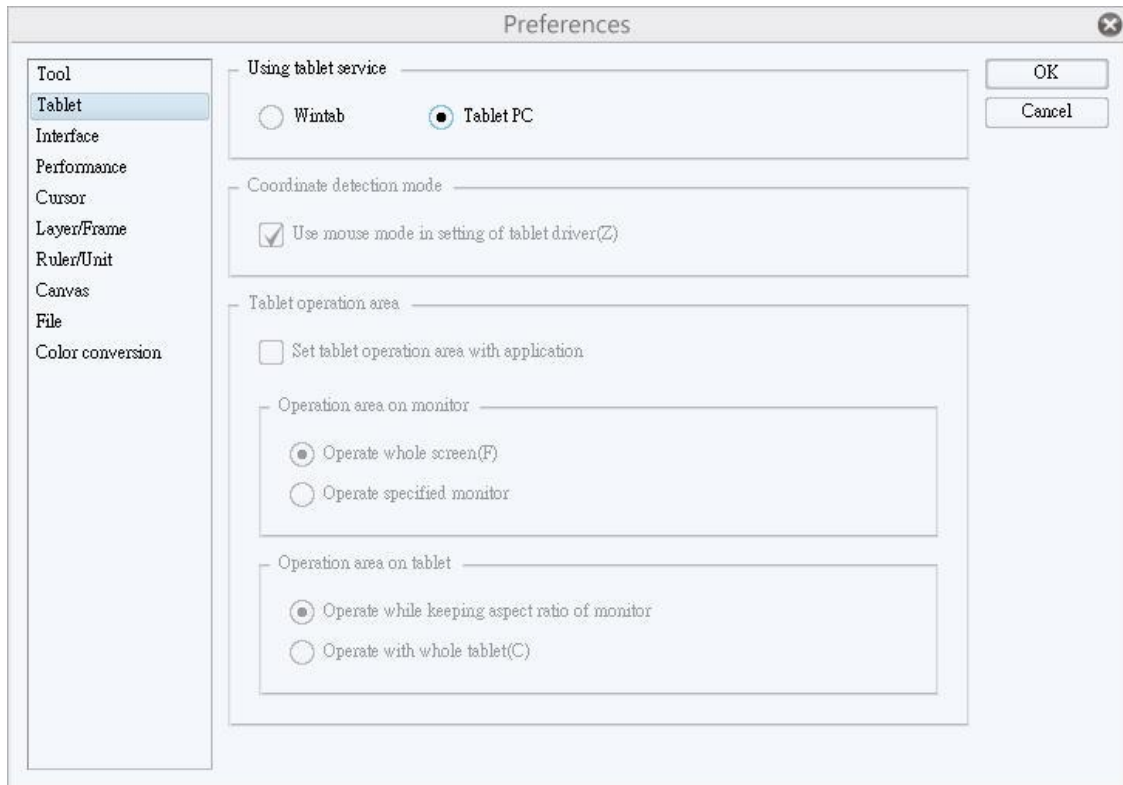
### 2. Corel Painter 2015

- A. Please select Edit→Preferences→Tablet...
- B. Tablet options please check “RTS-compatible device (Real-Time Stylus)”
- C. Multi-touch Options: Please uncheck “Enable Multi-touch”



### 3. Clip Studio Paint

- A. Run Clip studio paint and press 「Ctrl+K」 to open 「Preferences」
- B. Select “Tablet”
- C. “Using tablet service” please select “Tablet PC”
- D. Press “OK” and restart Clip Studio Paint



### 4. SAI2

## VI. How to care for your ARTISUL

5. Keep the U Pen and the ARTISUL LCD screen surface clean. Dust and dirt particles can stick to the pen and cause excessive wear to the screen surface. °
- ✓ Wipe the LCD screen gently with a soft cloth.
- ✓ Stubborn stains may be removed with a cloth slightly moistened with a solution of mild soap and warm water.

→Note:

1. Unplug the ARTISUL cable before you begin cleaning your ARTISUL.
2. Never spray water or detergent directly in ARTISUL. It may cause damage to ARTISUL.
3. Never use strong solvent such as a thinner or alcohol for cleaning.
4. Never reverse or compress the ARTISUL cables and don't bend it over 90°. It may cause damage to the cables.

## Appendix 1: Troubles and Solutions

No display and the status LED doesn't light.

- Verify the cable is connected between ARTISUL and computer.
- Verify that AC power cable is connected , and the ARTISUL is turned on.

No display , the status LED does light.

- Your computer may be in power management mode. Please try move the mouse, or depress any key on your keyboard.
- Verify the HDMI cable is connected between ARTISUL and computer.
- Verify the display setting on your system. Maybe it just display on other screen.

The color white does not display as white.

- Check the color profile setting that you are using with ARTISUL.
- Open Monitor Tuner, and press "Restore Default" to restore factory setting .
- Verify the HDMI cable and port are fully connected.

The pen does not work.

- Verify the cable is connected between ARTISUL and computer.
- Verify does other tablet driver in your computer .Please reinstall it and reboot computer.
- Be sure you are using only the pen that came with your product, or a accessory pen specified for use with ARTISUL . Other pens may not function properly on ARTISUL .
- Please try uninstall ARTISUL driver and install it again.

No pen pressure.

- Verify the application supports pen pressure.
- Check pen pressure of application was turn on.
- Please try uninstall ARTISUL driver and install it again.
- Check "Support digital ink" setting in ARTISUL driver.
- Some applications need to adjust pen pressure. You can try adjust setting of pen pressure.
- Try reboot your computer .

Cursor has offset in application.

- Please update application.
- Try run application as administrator.
- Some applications need to change setting of tablet. Please try different setting on your



application.

## **Appendix 2: Uninstall ARTISUL Driver.**

1. Go to "Control Panel".
2. Select "Uninstall a program"
3. Double click "ARTISUL Driver"
4. Click "OK" when the uninstallation instructions show on your screen
5. Wait uninstall successfully message and click "OK" to reboot computer.

## Appendix 3: Hot Key comparison table

Hot key	Keyboard Shortcuts
Copy	Ctrl + C
Cut	Ctrl + X
Paste	Ctrl + V
Undo	Ctrl + Z
Close the Active Item/App	Alt + F4
<b>Modifier...</b>	
Ctrl	Ctrl
Alt	Alt
Shift	Shift

Photoshop Tools	
Hot key	Keyboard Shortcuts
Image Size	Alt + Ctrl + I
Fit on Screen	Ctrl + 0
Actual Pixels	Alt + Ctrl + 0
Zoom In	Ctrl +
Zoom Out	Ctrl -
Undo/Redo	Ctrl + Z
Stepforward	Shift + Ctrl + z
Stepbackward	Alt + Ctrl + z
Cut	Ctrl + x
Copy	Ctrl + c
Paste	Ctrl + v
Free Transform	Ctrl + T
Copy Merged Layers	Ctrl + Shift + C
New Layer	Shift + Ctrl + N
Layer Via Copy	Ctrl + J
Merge Layers	Ctrl + E
Group Layers	Ctrl + G
Create/Release Clipping Mask	Alt + Ctrl + G
Go to Previous Layer	Alt + [
Go to Next Layer	Alt + ]
Deselect	Ctrl + D
Inverse (Selection)	Shift + Ctrl + I
Select All Layers	Alt + Ctrl + A
Hide/Show Palettes	Tab
Flatten Layers and Keep	Ctrl + Alt + Shift + E
Decrease Brush Size	[
Increase Bursh Size	]
Decrease Brush Softness	Shift + [
Increase Brush Softness	Shift + ]
Cycle Through Images or Curve Adjustments	Ctrl + Tab
Save As	Ctrl + Shift + s
Save For Web	Alt + Shift + Ctrl + s

Photoshop Tools	
Tools	
Hot key	Keyboard Shortcuts
Lasso	L
Magic Wand	W
Eyedropper	I
Crop	C
Healing Brush	J
Brush	B
Clone Stamp	S
Eraser	E
Type	T
Hand	H
Toggle Screen Modes	F
Move Tool	V
Selection Tool	A

Illustrator Tools	
Hot key	Keyboard Shortcuts
Group	Ctrl + g
Ungroup	Ctrl + Shift + g
Select All	Ctrl + A
Lock Selection	Ctrl + 2
Select Artwork in Action Board	Ctrl + Alt + A
Deselect All	Shift + Ctrl + A
Lock all Deselected Artwork	Ctrl + Alt + Shift + 2
Unlock all Artwork	Ctrl + alt + 2
Undo	Ctrl + Z
Paste in front	Ctrl + F
Paste in back	Ctrl + B
Send to Front	Ctrl + Shift + ]
Send to Back	Ctrl + Shift + [
Flush Left	Ctrl + Shift + L
Flush Right	Ctrl + Shift + R
Center	Ctrl + Shift + C
Smart Guides	Ctrl + U
Actual Size	Shift + Ctrl + 0
Fit in Window	Ctrl + 0
Save As	Ctrl + Shift + s
Save for Web	Ctrl + Shift + Alt + s

Illustrator Tools	
Tools	
Hot key	Keyboard Shortcuts
Selection	V
Direct Selection	A
Magic Wand	Y
Pen	P
Lasso	Q
Type	T
Paintbrush	B
Pencil	M
Eraser	Shift + E
Eyedropper	I
Rotate	R
Free Transform	E
Toggle Screen Mode	F
Hand	Spacebar

Clip Studio Paint Tools	
Hot key	Keyboard Shortcuts
Select All	Ctrl + a
Clear outside of selected area	Shift + backspace
Clear Selection	Ctrl + d
New Raster Layer	ctrl + shift + n
Combine to layer below	ctrl + e
Combine selected layer	Shift + Alt + e
Combine showing layer	Ctrl + Shift + e
Switch selected layer (above)	Alt + ]
Switch selected layer (below)	Alt + [
Invert selected layer	Ctrl + Shift + I
Hue/Saturation Luminosity	Ctrl + U
Reduce Opacity	Ctrl + [
Increase Opacity	Ctrl + ]
Zoom in	Ctrl +
Zoon out	Ctrl -
Ruler	Ctrl + r
Fit to Screen	Ctrl + 0
Pixel Size	Ctrl + Alt + 0
Snap to Ruler	Ctrl + 1



Clip Studio Paint Tools	
Tools	
Hot key	Keyboard Shortcuts
Eraser	E
Brush	B
Pen	P
Fill	Alt + backspace
Free Transform	Ctrl + Shift + t
Scale up or down / Rotate	Ctrl + t
Text	T
Color Picker	Alt
Rotate	R
Switch Main/Sub Colors	X
Switch drawing and transparent colors	C
Clip at layer below	Ctrl + Alt + g

Corel Painter	
Hot key	Keyboard Shortcuts
Undo	ctrl + z
Redo	ctrl + y
Copy	ctrl + c
Paste (as new object)	ctrl + v
Copy Visible	Ctrl + Shift + c
Send to front	Shift + pageup
Send to back	Shift + pagedown
Send forward one	Ctrl + pageup
Send backward one	Ctrl + pagedown
Duplicate	Ctrl + d
New Layer	ctrl + shift + n
Group	ctrl + g
Ungroup	ctrl + u
Select All	ctrl + a
Paste into Selection	Ctrl + Shift + v
Select all layers	Ctrl + Shift + l
Copy merged	Shift + Ctrl + C
Invert	Ctrl + I
Zoom in	Ctrl +
Zoom out	Ctrl -
Rulers	Ctrl + Shift + r
Fit in Window	f4
Save	Ctrl + s
Export Source Image	Shift + Ctrl + S

Corel Painter	
Tools	
Hot key	Keyboard Shortcuts
Brush	B
Dropper (sample color)	d
Fill	ctrl + f
Rotate Canvas	e
Magic Wand	w
Text Tool	t
Layer Adjuster	F
Lasso	L
Use Last Used Filter	Ctrl + /
Screen toggle mode	Ctrl + M
Free Transform	Ctrl + alt + t
Resize Canvas	Shift + Ctrl + R
Decrease Brush Size	[
Increase Brush Size	]